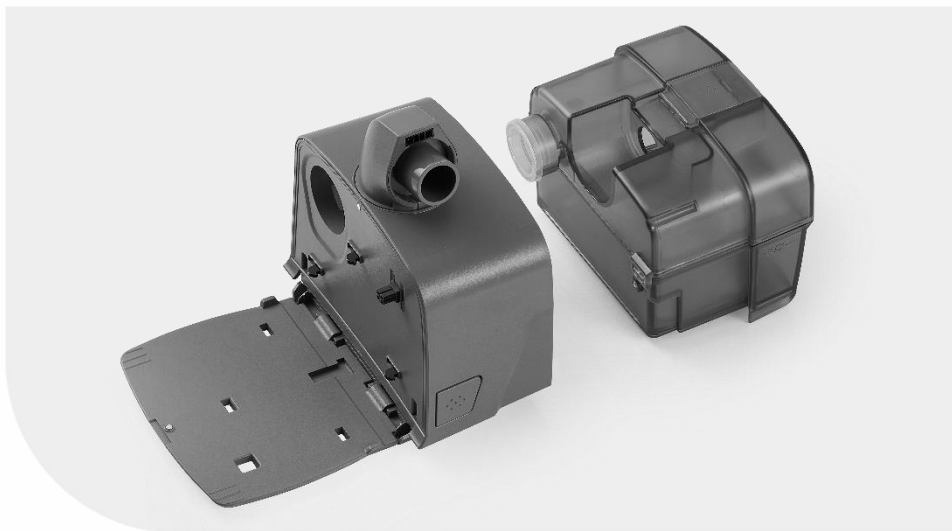


iX Series—Heated humidifier with Water Chamber

User Manual



Be well, Live well

Wellell

⚠ Before using the Product, read this user's manual through carefully and completely.

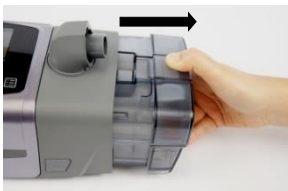
Setting Up



Place the heated humidifier on a stable level surface and release the bottom pad.



Connect the device with heated humidifier horizontally.



Hold the water chamber at the top and bottom

and take the chamber out by the right side.



Open the top cover and fill it with distilled water up to the maximum water level mark, then close it.

⚠ Caution: After filling the water, keep the water chamber at level position before assembling with the device.

⚠ Caution: Do not fill the water chamber with hot water.

Disconnect



Heated Tubing could be horizontally removed from humidifier by pressing both sides of the cuff.



Slightly press the release button on the humidifier, and the device will disconnect from humidifier. Horizontally pull the device away from the humidifier.

⚠ Note: To avoid damage, please do not forcefully disconnect the device without pressing the release button.

Cleaning

The humidifier should be checked and cleaned daily (or after every time use) to prevent the growth of germs that might affect the user's health.

- (1). Disconnect accessories if necessary.
- (2). Wipe the outside of the humidifier with a cloth dampened with water and mild detergent
- (3). Open the water chamber and discard any remaining water.
- (4). Wash the water chamber with warm water and mild detergent.
- (5). Rinse the water chamber and allow to dry out of direct sunlight and/or heat. Inspect all parts for any damage after cleaning and replace if necessary.

Technical Specification

Model No.	9S-010800
Power Requirement	DC, 24V, 2.5A
Dimensions	11.5 x 14.2 x 14.7cm
Weight (without Water)	Approximately 590 g
Water Capacity	To maximum fill line 300ml
Maximum Heater Plate Temperature	Approximate 70°C (158°F) ⚠ Note: Please do not touch the heated plate during/after operating.
Pressure Drop	0.2cmH ₂ O @ 60LPM
Humidity Output	≥ 12 mgH ₂ O/L (Ambient temperature: 23°C ± 2°C & Relative humidity: 60%±15%)
Operating Environment	Temperature: 5°C to 35°C (41°F ~95°F) Humidity: 15% to 95%RH, non-condensing Altitude: Sea level to 2,438 m; air pressure range 1060 hPa to 752 hPa
Storage Environment	Temperature: -15°C to 50°C (5°F ~ 122°F) Humidity: 10%RH to 90%RH, non-condensing
Transport Environment	Temperature: -15°C to 60°C (5°F ~ 140°F) Humidity: 10%RH to 90%RH, non-condensing

USA

Wellell America Corp.

927 Mariner Street,
Brea, CA 92821, USA



Wellell Iberia S.L.

Elcano 9, 6ª planta
48008 Bilbao. Vizcaya. Spain



Wellell Inc.

No.9, Min Sheng St., Tu-Cheng,
New Taipei City, Taiwan

www.wellell.com

696026-0000 v1.0_Print_2024-02-22

All rights reserved

**For complete user instructions, refer to the
iX Series System Instruction Manual.
More information is available on www.wellell.com**